

# Life Impact for Humanity - LIFH

## Who We Are?

**Life Impact for Humanity (LIFH)** is an outreach program that partners with leaders of the community to transform the social wellbeing of the community's lifestyle to bring about change and sustainability for functional growth.

## Our Purpose & Vision:

- **To transform the life and wellbeing for those that are less fortunate and who are in need.**

## Our Mission:

- **To build and establish a foundation for growth and for sustainable transformation.**

## Our Sustainable Development Goals:

- a) To bridge the gap for racial diversity.
- b) To bridge unity with the community.
- c) To re-establish homeless, veterans, elders, disables, single parents, and formerly incarcerated through programs, to equipped them, to be pillars of the community and society.
- d) To equip the youth with tools to build for their future and to help sustain their community.
- e) To impact each individual with an opportunity to succeed.
- f) **IMPACT! IMPACT! IMPACT! IMPACT** all spheres of influence, such as family, religion, government, education, business, science, innovation, technology, media, arts & entertainment.

## A brief description the LIFH Programs:

1. We offer transitional classes & programs that will ensure those that come through are well equipped back into society.
2. Our skills and vocational training programs will include:
  - a. Trade school
  - b. Night school
  - c. Mental health programs
  - d. Psychology & Counseling
  - e. Automotive service technician
  - f. Electrical & Electronic Training
  - g. Barber classes
  - h. Cosmetology & Hair styling classes
  - i. Nail technician classes
  - j. Photography classes
  - k. Arts & Entertainment classes
  - l. Music Classes
  - m. Web development
  - n. Fashion designing
  - o. Interior designing
  - p. Catering & Hotel management classes
  - q. Food & beverage management
  - r. English as a Second Language
  - s. Writers, Poets, and Historians
  - t. Entrepreneur Programs
  - u. Financial freedom classes & Finance Literacy Classes

- v. Innovation Hub; for collaboration, networking and pitch night for ideas and start ups
- w. Job Corps that will help ages 16-24 improve the quality of their lives by empowering them to get great jobs and become independent.

### **Our LIFHers:**

- 1. Formerly Homeless (individual & family)**
- 2. Formerly Incarcerated Homeless**
- 3. Veterans Homeless**

### **Our LIFH Community Initiatives:**

- 1. Food Truck Feeding Ministry** → now feeding the community in need while providing work opportunity for LIFH residents.
- 3. LIFH Family Health & Wellness Resources Center** → health, wellness, and mental services for LIFH communities. Which includes medical check-ups, dentals, eye, and hearing check-ups.
- 4. LIFH Community Services** → just serving the community and cleaning up old homeless encampments and abandoned lots/buildings in Oakland including removal of graffiti from business, residential buildings. Plant trees in Oakland and pick up fruit from elderly residence of Oakland.
- 5. LIFH Living Legends** → Monthly panel discussions & testimony nights, gathering all information from our Oakland Living Legends who are ages 75 and up to preserve history and pass it on to our future generation to prevent history from repeating.
- 6. LIFH New Generation** → new generation partnering with Oakland Living Legends to be mentored, equipped, and trained.
- 7. Formerly Incarcerated Restoration Program** → exclusively working with Formerly Incarcerated Giving Back.
- 8. Community Garden**
- 9. Veteran Program**
- 10. Disability Program**
- 11. Social & Advocacy Center (SAC)** → will act as a resource center where LIFH residents and their families will be given help & advice to support them to integrate into society and get a head-start in life. Not much attention has been given to LFHs' psychosocial services and thus the need to focus more on building sound social and economic support systems for them.
  - The goal in every case is to identify the person who needs support & work to improve their quality of life and enable them to live as independently and as happy as possible within our local community.
- 12. Education for Children and Youth Programs**

## **LIFH Community Developments in LIFH Homes, LIFH Apartments, LIFH Dorms, LIFH Condos, and LIFH Centers.**

- Is a master planned community in Oakland that provides affordable, permanent housing and a supportive community for men, women, youth, and children coming out of chronic homelessness. This transitional and transformative residential program exists to love and serve our neighbors who have been living on the streets, while also empowering the surrounding community into a lifestyle of service with the homeless.
- LIFH is leading an unprecedented collaborative effort to mitigate homelessness in the city of Oakland.
- This transformative community exists to care for and serve our friends who are coming out of chronic homelessness and yearn for permanent place to call home.

## Features of LIFH Community Infrastructure and will add structures and amenities:

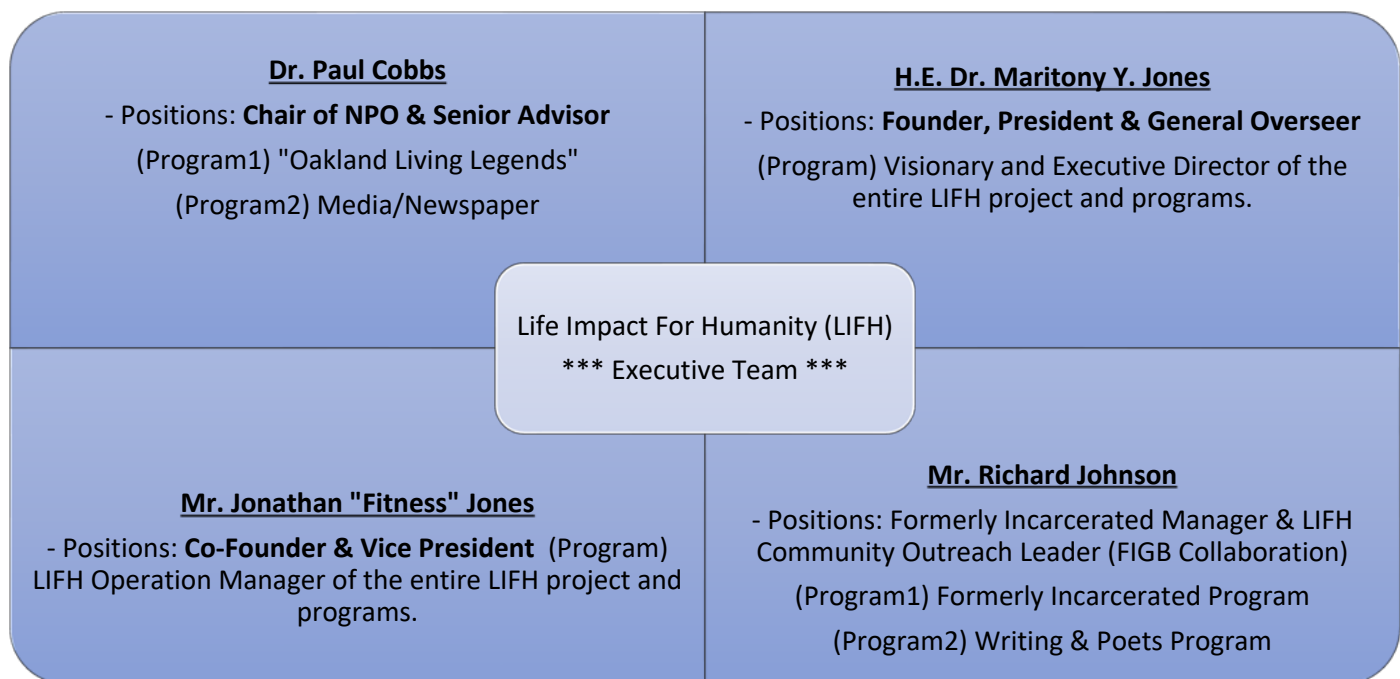
- i. LIFH Micro-Homes & Tiny Mansions
- ii. LIFH RV/Park Homes
- iii. LIFH Apartments
- iv. LIFH Dorms
- v. LIFH Condos
- vi. LIFH Laundry/Restroom/Shower Facilities
- vii. LIFH Drug & Alcohol Rehabilitation Center
- viii. LIFH Community Centers; Market, Cinema, Art House, Garden Organic Farms, Woodworking Shop, Automotive Shop, Concession & Catering,
- ix. LIFH Community Works Entrepreneur Hub, Office, Employment and Class

### \*\*\*\*\* The LIFH Community Long Term Goal \*\*\*\*\*

- i. Is to create such LIFH projects in every city across California and then across the entire United States.
- ii. LIFH is keen on creating similar projects across United States by partnering with donor organizations and other philanthropic groups
- iii. LIFH projects will promote social change through a three-pronged approach: development and provision of social services, changing mental & attitudinal stereotypes in our society & advocating for better legislation and knowledge sharing to the benefit & development of LIFH throughout California and United States homeless infested states.

### \*\*\*\*\* LIFH Project Cost \$50k - \$50million startup cost \*\*\*\*\*

- i. Land Acquisition & Preparation Cost → (TBA/ varies based on donations, etc.)
- ii. Residential Building Cost → (TBA/ varies based on donations, etc.)
- iii. Non-Residential Buildings & Infrastructure → (TBA/ varies based on donations, etc.)
- iv. Non-Residential Fittings & Equipment Cost → (TBA/ varies based on donations, etc.)
- v. Professional Fees, and Statutory Permits, Duties & Taxes → (TBA/ varies based on donations)
- vi. Working Capital and Operating Costs for 10 years → (TBA/ varies based on donations, etc.)



## H.E. Dr. Maritony Jones

### Kingdom Global Ambassador & Empowerment Advocate

**Dr. Maritony Jones** is a devoted humanitarian, entrepreneur, property mogul and philanthropist. In addition, she is an accomplished motivational speaker and empowerment advocate of the Kingdom of God who advises Presidents, Kings, and Founders around the world. As she orchestrates her lifestyle of purity and righteousness by conducting herself as a minister of the Gospel of Jesus Christ. She is recognized by her fellow leaders of the five-fold as an astounding Apostle and Kingdom global ambassador who leads by relevant teaching and uncompromising purity lifestyle.

Over the 30 years of ministry, **Dr. Maritony** has gained unwither depths to her foundation where she carried the life of Jesus and the Gospel of the Kingdom into her humanitarian efforts exposing and expanding the love of God to the nations around the world. Just as she teaches the simplicity of the Gospel of the Kingdom to the World that results impact and transformation to so many people from different generations and nations.

### Business Leader & Life Coach

**Dr. Maritony** is a business leader with a diverse professional background that has enabled her to flourish for over 20 years as an international humanitarian and mentor. An effective coach and trainer, she excels as a leading life coach, business coach, international consultant, business developer leader, empowerment advocate.

### Business Developer

With a background in law, **Dr. Maritony** has over 20 years' experience in private investigations, accounting, contract negotiations, budget development, and auditing. She has helped launch innovative products for notable companies in United States.

### Financial Analyst

**Dr. Maritony** has managed the personal estates and corporate accounting of her clients to ensure maximum growth with low risk and long-term benefits. She specializes in the areas of estate planning, accounting auditor, investment, and financial advisor.

### Mentor

**Dr. Maritony** mentors and equips individuals that aspire to achieve goals on high levels. This includes fivefold ministry leaders, future corporate, philanthropic, and humanitarian-minded leaders, millionaires, billionaires, trillionaires, and exceedingly wealthy individuals to restructure the way they do and view life, business, and investing. She excels at conflict resolution within companies, corporations, and families. **Dr. Maritony** has a track record for aiding individuals in ending long-term family feuds and lawsuits. She also trains and coaches her clients to reassess estate and trust documents to suit their respective needs and lifestyles.

### Humanitarian

**Dr. Maritony's** fierce passion for humanitarian efforts has been the major thread in all of her work for over 30 years. Her devotion to helping children in poverty, orphans, children exposed to sex trafficking or abductions, early childhood education, feeding and clothing homeless, and widespread community efforts has been the forerunning inspiration for her choices of work. She spends a portion of every year on international missionary trips to work hands-on with children in the impoverished communities that she continues to offer support to throughout the year.

**Dr. Maritony** resides in California, UK & Ghana Africa

## Next Step – January 2023 Launch:



### Phase I

### Phase II

- We must treat the homeless crisis with urgency and a humanitarian crisis with the urgency it demands
- We must partner with our Oakland City Officials & Residents along side with Community Leaders and Faith Based Leaders.
- We must have 1 unified single strategy to irradicate homelessness and restore the city of Oakland bringing together government, the private sector, and other stakeholders.
- If the City of Oakland Mayor should declare homeless crisis an emergency like the new LA mayor Bass, to receive more funding to solve the issues of homelessness.
- Partner with Veterans Affairs on housing the homeless veterans ASAP.
- Acquire City Owned Properties and Abandoned Buildings/Homes
- Purchase old Motels, Hotels, Apartments and unused training or school facilities
- Donated Lots will have homes delivered to be placed from; RV, Tiny Mansions; Nano System Living Homes, & any new innovated pop-up homes.
- Build LIFH Community Centers, LIFH Markets, LIFH Innovation Hub, and LIFH Art Center next to the LIFH Community Properties or walking distance.

## Capital Campaign Partners

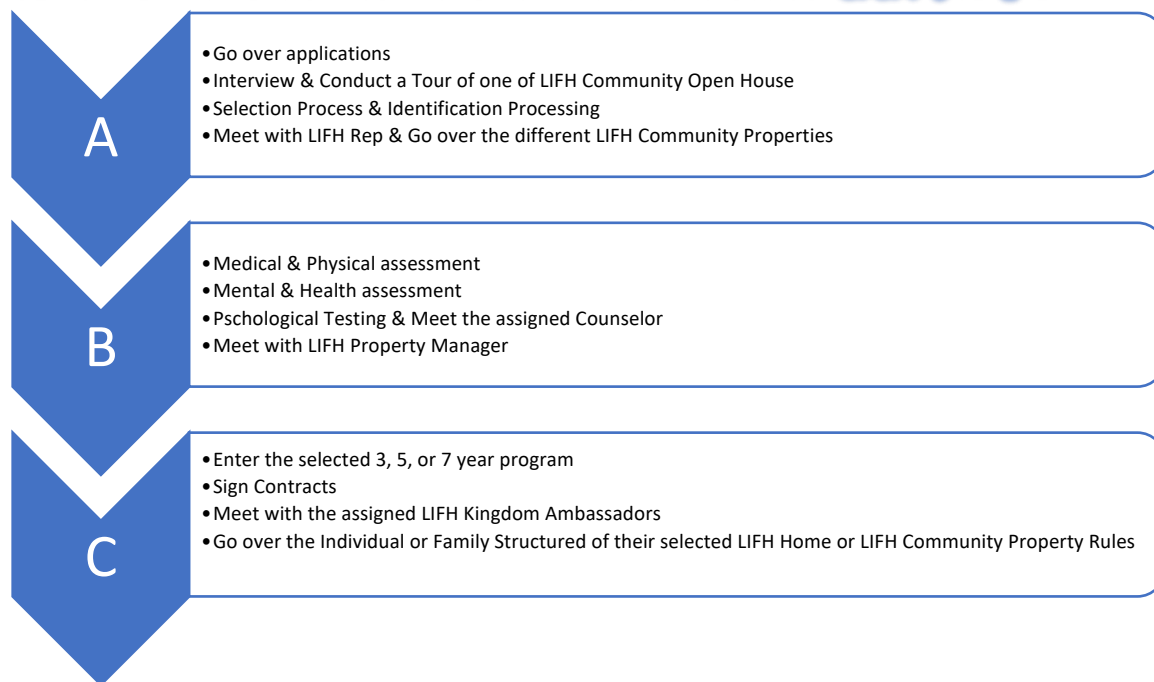
- Our Capital Campaign Partners are vital to creating the infrastructure, community buildings and individual housing necessary for our homeless neighbors to come to LIFH Community Properties. We are grateful for the support of these partners in serving goodness every day to those who need us most.
- Phase Ia – is complete with permanent homes for nearly 500 formerly homeless and women.
- Phase Ib – construction on Phase Ib continues and will provide an additional 700-1000 dorms, homes for those suffering homelessness on the streets of Oakland today, starting the worst and most forgotten part of the city.
  - Team 1 – Architects
  - Team 2 – Builders
  - Team 3 – Constructions
  - Team 4 – Educators
  - Team 6 – Staff & Volunteers
  - Team 7 – Advocates, Social We
- Phase II – construction on Phase II is to create all the different LIFH Centers, Station, Market, Retail, & Hub.
- Phase III – construction of Rehabilitation Center & Clinics plus our very own research & databased to collect all African American Testimonies, Stories and Africa Continent History including the Transatlantic info.

## Interest Becoming a Partner?

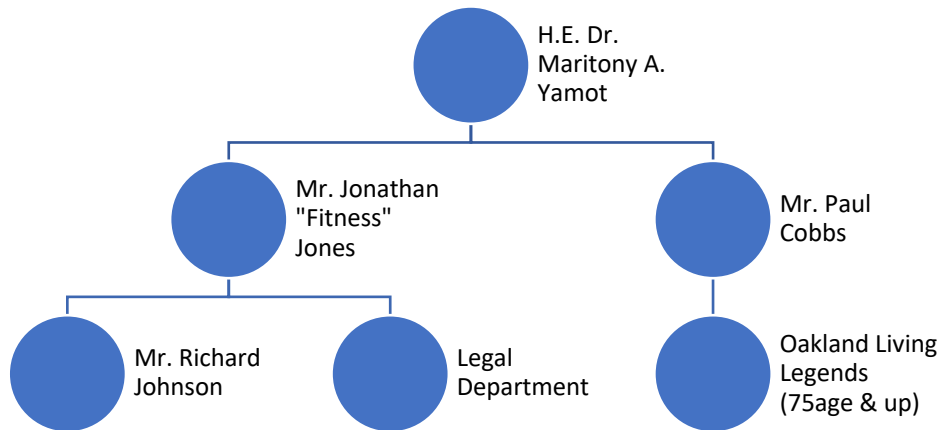
- Capital Campaign – Support the expansion of LIFH and help lift up a chronically homeless individual into home and community.
- Corporate Engagement – donate or volunteer are vital to our programming. Your support is serving goodness to our friends in need. (Example: Corporate Giving Back or Community Building initiatives)
- Government Partners → City of Oakland, City of Alameda, & Alameda Navy Base
- Partnerships & 5-year Plan Partners:
  - Key Partners (Post Newsgroup, Formerly Incarcerated Giving Back, AASEG-African American Sports & Entertainment Group, Maritony & Associates, Iconic Legends Ltd., RMC Kingdom Investments, Eagle Property Partners, USBA-United States Business Alliance, & more)
  - Leadership Circle
  - Foundation Partners (Purity Heart Foundation, M&A Foundation, & more)
  - Community Partners
  - Nonprofit Partners (CGC-Congress for Global Communications, AIFM-Afro International Film Market & Festival, World Alliance, CEM Ability Village, & more)
  - Faith Leaders Partners (Apostle Kim Murphy, Evangelist Anh Colton, & more)
  - Humanitarian Partners (Clinton Foundations, United Nations, UNESCO, Nano Living System, & more)

## LIFH Success Program:

You are invited to join the dynamic community leaders, innovators, and collaborators in Oakland California who have united in this new movement. See our 3, 5, 7-year plan.



## Hierarchy of LIFH Organization:



## LIFH Kingdom Ambassadors:

- Special Addition to our LIFH Community – Teamwork is the key to success!!!
- We are adding a special residential members called LIFH Kingdom Ambassadors which are divided into three categories: Missionary, Humanitarian, & Retirees.

Some LIFH Kingdom Ambassadors are retired and interact with neighbors first thing each day through gardening together or at the on-campus dog park. Some interact with neighbors by hosting breakfast once a week or on a walk through the Village prior to going to work. And others must get kids ready for school and themselves ready for work, so the best they can manage is to call neighbors by name, smile and wave ‘good morning’ on the drive to the front gate.

Midday comes and our neighbors are out and about, many working around the LIFH Community Center as part of LIFH Community Program—cutting grass, groundskeeping, cleaning common kitchens or restrooms, or producing “goodness” through any of the micro-enterprise opportunities available to them.

LIFH Kingdom Ambassadors interact with residents and each other in numerous ways, large and small. Depending on boundaries and availability, a LIFH Kingdom Ambassadors might volunteer in LIFH Gardens or the LIFH Art House, pick up a prescription for a neighbor or offer a ride to the supermarket. Evening comes and LIFH Kingdom Ambassadors encounter neighbors at the bus stop, checking the mailboxes or walking their dogs. Every visit is an opportunity to listen, encourage, affirm, and deepen intentional relationships.

## Teamwork

LIFH Kingdom Ambassadors are organized on committees to provide support in a structured manner to neighbors and fellow LIFH Kingdom Ambassadors.

### Service to neighbors

- LIFH is headquartered in LIFH Community Properties and actively manages the neighbor population. Through experience and wisdom, staff members recognize individuals who might otherwise fall through the cracks. LIFH Kingdom Ambassadors. are called on to contact these

at-risk neighbors from time to time, inviting them to participate more fully in the communal experience on campus.

- LIFH also identifies neighbors who are vulnerable in some way, who may need specific, additional care. Again, LIFH Kingdom Ambassadors answer the call to serve.
- And with all the new construction, lots of new neighbors are always arriving to the Village. LIFH Kingdom Ambassadors play a key role in connecting new neighbors to resources, helping them become acquainted with life in the LIFH Community Properties. All LIFH Kingdom Ambassadors support LIFH in meeting these needs, human-to-human and heart-to-heart.

## **Service to fellow LIFH Kingdom Ambassadors.**

- LIFH's target LIFH Kingdom Ambassadors population in LIFH Community Properties minimum occupants 10% & max 20%. Existing LIFH Kingdom Ambassadors are asked to support new, discerning, or aspiring LIFH Kingdom Ambassadors neighbors. These roles usually last one-year and involve a regular rhythm of meetings.
- Serving those ravaged by poverty, injustice, mental illness, and addiction is particularly taxing and can lead to fatigue and burn-out. Downtime away from LIFH Community Properties & Centers is a must. Equally important, however, is that LIFH Kingdom Ambassadors have downtime with each other. This unique fellowship with LIFH Kingdom Ambassadors—sharing the journey—is an absolute godsend. Beyond serving together, LIFH Kingdom Ambassadors also have structured and unstructured “Missional-only” time—walking groups, cookouts, ice cream socials, potluck dinners, cart path conversations, porch visits, board games, wine and cheese, monthly small group meetings, quarterly all-hands meetings, and our annual off-campus retreat. LIFH Kingdom Ambassadors neighbors stand in the gap for each other, linking arms and sharing the burden.

As you have no doubt gathered, there is not a simple list with a checkbox for all the things LIFH Kingdom Ambassadors do. LIFH Kingdom Ambassadors live prayerful, connected lives, and out of a spirit of gratitude, step up where needed, respond when the Spirit prompts, and offer what we can to be of service.

## **LIFH Kingdom Principle Guidelines:**

Protocols, Guidelines, Operations, Code of Ethics, Articles of Incorporations and Bylaws for our LIFH Kingdom Ambassadors & our entire LIFH Community Project and initiative are based only in Kingdom Principles.

## **Housing the Homeless Phase I- Guidelines:**

First, contact the City Officials to get the access to the list of City owned buildings, homes, residential and commercial real estate. We worked with other City that has given us properties for only \$1.00 as long as we have the program and plans to redevelop the property and give back to the people within the community or city the property is from. For example, a house, condo, motel, apartment, or any commercial building that we will transformed for housing the homeless with attached Program and connections within the NPO partners of LIFH. Second, contact State including the Federal Government for the same opportunities.

## **Housing the Homeless Phase II- Guidelines:**

With the help of our donors and corporate partners, we are looking forward to purchasing a lot or use any government owned lot in Oakland that we will establish and introduced our very first “Tiny

Mansions” to build the housing for our Homeless Elders and Veterans. Due to the cold weather during this Winter 2023, there’s have been 150 homeless elderlies dying daily all over Oakland to Santa Clara County alone not included the high suicide rates of veterans in this last quarter. Using Tiny Mansions is built faster, stronger, and better.

### Faster:

- Only 28 Days: After the permit is issued, the time it takes the concrete slab to be cured.
- Only 3 Days: Tiny Mansions transports its MTHs to any site in California after the permits are issued and the slab is cured. Move in or rent it out. It’s that simple



### Stronger:

- Hot-rolled ASTM A-36 Steel-framed structure
- Flame-retardant EPS insulated panel walls
- Anti-termite, mold-resistant, anti-ballistic (optional) Advanced Engineered Stucco
- Mansion-style 5’ x 9’ double-door, wrought-iron Entry Doors



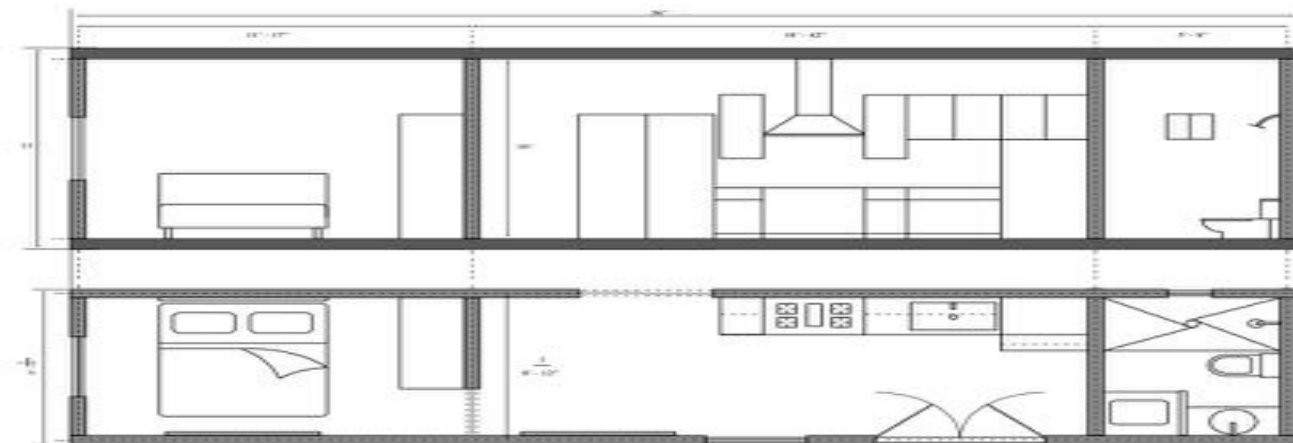
### Better:

- Slab Italian marble floors in the common areas and Hardwood floors in the bedroom(s)
- Quartz counters
- Italian Marble floor/wall/ceiling bathrooms with generous walk-in showers.
- Dual-pane European-style tilt-turn windows
- Stainless Steel appliances and Range Hood
- 65”- 80” Smart TVs
- Eco-friendly, turn-key, fully-furnished and ready to be moved in to at a GREAT PRICE!

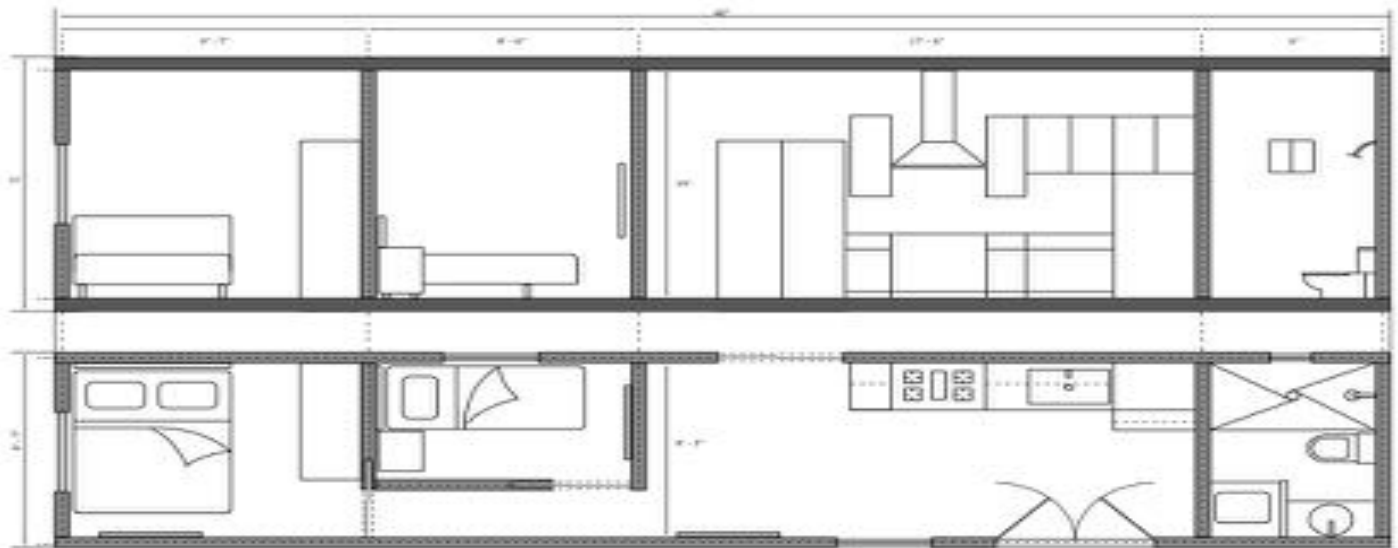


## 2 FLOOR PLANS

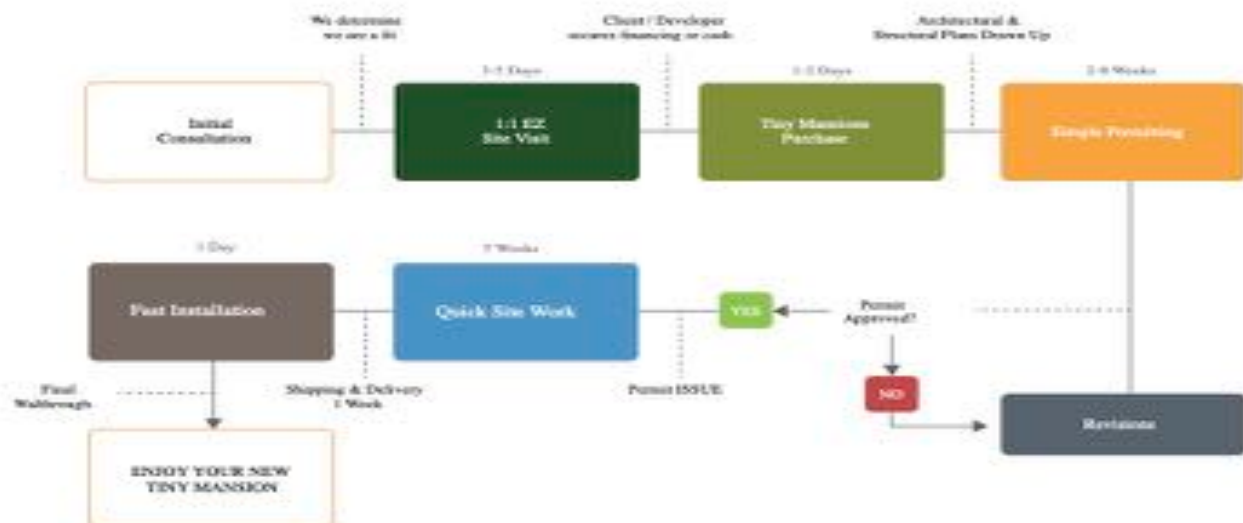
### Model#1: Tiny Mansions Luxury 36 (309 sq. ft. 1 bedroom, 1 bath)



## Model#2: Tiny Mansions Luxury 42 (360 sq. ft. 2 bedroom, 1 bath)



## Phase II Ordering Process for Tiny Mansion:



**LIFH will be one of the exclusive volume partners & saves us money+time:**

Money (our Tiny Mansions are priced at about 30%-50% off the price of regular ADUs, and below other comparable MTHs.)

Time (onsite stick-built or factory-built ADUs take between 6 to 12 months + to permit, build and/or assemble. A simple Use of Land Permit combined with an Electrical and Plumbing Permit are the only permits needed in order to be issued a Certificate of Occupancy. It's that simple!)



**For more info go to [www.tinymansions.homes](http://www.tinymansions.homes)**

## Housing the Homeless Phase III- Guidelines:

Partnering with some of the few builders within our networks, such as Nano Living System and Module Building Systems (MBS). Visit [www.modulebuildingsystems.com](http://www.modulebuildingsystems.com) for more MBS info.

### About MBS:

- MBS utilizes a post-tensioning technology revolutionizing the offsite building and construction industry. Our target markets include high-density multi-residential, affordable homes, student and senior housing, hotels, commercial and industrial buildings, and temporary buildings/shelters.
- MBS's building delivery model features a cost-efficient, finished, and quick-to-install pre-manufactured "flat-pack" wood panelized solution.

### Why MBS:

- MBS directly supports marginalized communities by manufacturing and assembling sustainable buildings using innovative modular technology.
- 1.6 billion people have inadequate housing worldwide.
- MBS technology and manufacturing-based build process is the precursor to revolutionizing the homelessness, humanitarian, and disaster relief efforts in North America. By reducing the cost to produce and with the transportability of ready-to-assemble buildings, we bring the ability to quickly and efficiently develop affordable and sustainable communities.
- MBS have secured partnerships with industry leaders, educational organizations, non-profits, and governments to provide a cost-effective and timely solution to these problems.



### Employment Impact with MBS, LIFH & Formerly Incarcerated Giving Back:

- Here at MBS, we believe in living wages, not minimum wages.
- We are building an organization and culture centered around our values and workforce.
- MBS employees receive full benefits, including health, sick days, paid vacation, maternity leave, and bonuses.



## The Process



### 1. ARCHITECT PLANS

The client's architect submits their building plans. Our engineers input the plans into manufacturing software using the latest CAD software.



### 2. MANUFACTURING

Our manufacturing CNC lines build the client's building 50% faster than current construction methods. It also saves up to 80% in material waste compared to traditional construction.

### 3. DELIVERY

Our pre-manufactured panels are efficiently packaged on collapsible "A" frames for easy loading/unloading and backhauling.

We can ship 1000 miles from our factory to the project site without extra wide-load shipping costs.



### 4. ASSEMBLY

Using advanced 3D modeling software and the precision of modern automated CNC machinery, we can precisely align each panel within exact tolerances.

Installation only requires eleven people to assemble a 5000 ft<sup>2</sup> building in three days. This will set a new industry standard for construction time.



## MBS Products

MBS' panelized and connection system separates us from the existing volumetric, modular, and offsite construction companies.

Our technology and panelized system allow the design process to be flexible and customizable. From simple temporary studio shelters to high-density multi-residential projects, our connection system and assembly process will change how we think about construction.

## FIXED BUILDINGS

The MBS post-tensioned technology has been specifically designed to support a large market segment comprising various residential and commercial stick-built development projects.

- Affordable Housing;
- High-Density Multi-Residential;
- Veterans Housing;
- Single Family & Townhomes;
- Workforce Housing;
- Hotels and Resorts;
- Student & Senior Housing;
- Commercial & Industrial Buildings.



# Improving Our Communities



40,000 ft<sup>2</sup>

## FOUR STORY MIXED USE

Manufacturing - 10 Weeks  
Assembly Time - 1 Month  
Total Project Time - 5 Months



SINGLE FAMILY

## MODERN AFFORDABLE HOMES

Manufacturing - 1 Week  
Assembly Time - 2 Days  
Total Project Time - 3 Weeks



TEMPORARY

## STUDIO SHELTERS

Manufacturing - 2 Days  
Assembly Time - 1 Day  
Total Project Time - 4 Days



TOWNHOMES

## THREE STORY

Manufacturing - 4 Weeks  
Assembly Time - 1 Week  
Total Project Time - 2 Months



TEMPORARY

## TWO STORY CLINIC / SCHOOL / OFFICE

Manufacturing - 2 Weeks  
Assembly Time - 1 Week  
Total Project Time - 1 Month



HIGH DENSITY RESIDENTIAL

## FOUR STORY

Manufacturing - 10 Weeks  
Assembly Time - 1 Month  
Total Project Time - 5 Months



CARRIAGE & LANEWAY HOMES

## GARAGE WITH LOFT

Manufacturing - 1 Week  
Assembly Time - 3 Days  
Total Project Time - 3 Weeks



TEMPORARY

## HOMES & OFFICES

Manufacturing - 1 Week  
Assembly Time - 2 Days  
Total Project Time - 3 Weeks

## Transforming places into communities where all people can thrive.

### Neighborhood Stabilization

The key to creating and transforming community is to see the power in the small but important element of being with others. To stabilize a community, you've got to eliminate the vacant eyesores that are constant reminders of deterioration and disinvestment. In order to create a stable community, it's important to recognize communities evolve constantly and with that comes changes that may affect long term residents of a community. It is critical not to stop change but to find ways to ensure long term residents remain in their communities through these changes.

# Phase III part B with Nano Living System:

## NANO LIVING SYSTEM, LTD.

### Technology Meets Construction

#### Company profile

Nano Living System™ (NLS) is an industry leader in providing state-of-the-art “green construction” technologies, sustainable design and project management services, as well offers to its clients a vast array of expertise and knowledge. Nano Living System was founded in 2006 and built on the commitment to providing the most up to date sustainable and eco-friendly building alternatives and renewable energy solutions.

In doing so Nano Living System developed the revolutionary construction methodology and avant-garde building system called the Nano Composite Wall (NCWTM), as well as its space saving technologies including its Suspending Bed and Flexible Furniture.

Nano Living System also offers additional services that include full-service civil site excavation, heavy earth-moving, clearing and grading, infrastructure, utilities, sewerage systems, roads, highways, parking lots, marinas/ ports and waste management and renewable energy facilities.

#### PRODUCTS & SERVICES

NLS offers hi-tech building systems that are more proficient, cost effective and energy efficient than other building technologies on the market. It reduces waste while providing higher quality management as the product is produced in a quality-controlled environment using computer controlled manufacturing. Efficiency is further enhanced by drastically reducing on-site construction from weeks to days. Furthermore, utilization of this technology will also reduce other involved costs, environmental impact throughout the lifecycle of the building and is offered at a more competitive price range than competing companies that offer sustainable building technologies.

This system was made possible through years of research and development in combination with architects, engineers and scientists from the EMPA research center in Dübendorf, Switzerland.

## NANO LIVING SYSTEM



## **Currently, Nano Living System maintains four sectors of focus:**

1. Innovative Building Technology
2. Renewable Energy Systems
3. Sustainable Building Materials
4. Space Saving Technologies

in magazine articles (inhabitant, Architectr, Green Living, USA Today, Boston Globe, etc.) by architects, engineers and journalists around the world and has secured itself during difficult market conditions. NLS has also created a recognized brand name, the first-of-its-kind in the development and construction industry, thus creating a name within the sector that is recognized as sustainable, eco-friendly and fashionable, consequently developing a strong presence in the sustainable building market.

## **BUILDING TECHNOLOGIES**

The NLS technology consists of a series of systems, including the innovative Nano Composite Wall (NCWTM), which is comprised of light gauge steel combined with additional composite and insulating materials that help to absorb CO<sub>2</sub>. In addition, the NCW contains no wood and is therefore not prone to the elements of wood, such as rot, mold, mildew, termites, vermin and more. Furthermore, the NCW does not promote the spread of fire, but merely scorches and does not burn. This technology permits the construction of buildings up to 30 meters (8-9 stories) and can be used for both residential and commercial construction, as well as in combination with a second technology owned by NLS called Nano Form Technology (NFTTM). NLS provides this technology to developers/contractors/governments/individuals, as well utilizes the system for the production of their own sustainably designed homes that are offered from just the structural shell of the house to a completely finished “turn-key” home. The NCW also has superior thermal, fire protection and acoustic capabilities that supersede other building methods. The NCW can be used for the construction of:

- Single-Family Housing
- Multi-Family Housing
- Hotels
- Student Accommodations
- Hospitals
- Care Homes

## **RENEWABLE ENERGY SYSTEMS**

NLS offers an array of the highest technology Renewable Energy systems that consist of applications that utilize natural resources for the production of energy, recycling of energy and recycling of normally wasted resources, such as water. NLS also provides above ground and below ground water collection systems, gray water recycling systems and black water recycling systems.

## **SUSTAINABLE BUILDING MATERIALS**

NLS also offers multiple options of sustainable finishing materials that include (but not limited to) recycled roofing tiles, recycled rubber shingles, recycled aluminum roofing, low-e double and triple glazed windows, cork flooring, bamboo flooring, recycled fiber cement and EPS exterior cladding, recycled interior cladding and more to accommodate the client to whatever finishing material they seek.

## **SPACE SAVING TECHNOLOGIES**

Nano Living System has also developed additional key components to help provide a complete solution to density issues in urban cities, one of which is called the “suspending technology”. These technologies can nearly double the living space of any area without the need of increasing the actual living area (or “footprint”). NLS offers flexible furniture such as the suspending bed, hydraulic table, flexible couch, intelligent kitchen and more. The flexible furniture is an intelligent method in maximizing minimal spaces. This technology can also be used in existing structures, such as hotels, studios, student housing, cruise ships, etc.

Nano Living System is the first to offer within the building industry an innovative solution that saves time and money, is highly eco-friendly and has the stamp of “Swiss Quality” ensuring quality assurance. Nano Living System also takes “time” and “waste” very seriously, which is why the company has developed its own system to make one of the most efficient and sustainable composite wall/building systems on the market. This system can be used to create the walls and roof systems of any house or structure and allow the shell and wall system to be assembled in a fraction of the time versus buildings constructed using traditional building methods. With this green modernization of building technology the company reduces waste (on and off-site), reduces construction time and minimalizes impact on the environment.

Nano Living System provides a large selection of models and styles to suit all types of residential and commercial developments in order to facilitate the needs and requirements of all clients.

In addition, Nano Living System offers more competitive pricing than other providers of “sustainable” homes in the market. Nano Living System can be used in all types of residential applications including luxury high rise developments, mid and low rise structures, individual villas, as well as other applications such as churches, schools, hospitals, retirement facilities and care homes, etc.

## **COMPANY HISTORY TO DATE**

- NLS has already gained market acceptance, as well as vested interest from government organizations, private companies and PPP’s seeking developments using NLS technology and/or distribution rights in the United States, United Kingdom, Brazil, Colombia, Vietnam, Greece, Philippines, UAE, Morocco, New Zealand, Lybia, UAE, Saudi and Maldives, as well as FEMA (Federal Emergency Management Agency) who is seeking the production of disaster relief housing using NLS technology.
- NLS was recently personally invited to Dubai, UAE by H.E. Dr. Mohommed Omar Bin haider regarding the use of NLS technology in the development of two new hotels in Dubai, as well as for future developments throughout multiple countries.
- NLS also owns several patents, trademarks, copyrights and additional IP regarding the NCWTM, Nano Living System and Nano houses. The members of the Design/Development team have successfully designed, developed and constructed numerous project developments using the Nano Living System.

- NLS has also developed the first eco-social network that will be implemented in the near future, complemented by a smart phone application.
- NLS has significant market popularity as seen in magazine articles (inhabitant, Architectr, Green Living, USA Today, Boston Globe, etc.) by architects, engineers and journalists around the world and has secured itself during difficult market conditions.
- NLS has also created a recognized brand name, the first-of-its-kind in the development and construction industry, thus creating a name within the sector that is recognized as sustainable, eco-friendly and fashionable, consequently developing a strong presence in the sustainable building market. Furthermore, the President & CEO of Nano Living System, Gaby Strehler, has given guest lectures at the University of Geneva (Master's Program) on providing viable solutions to urban density issues and has attended upon invitation numerous global forums such as UBS' Global Philanthropic Services, European Venture Philanthropy Association, Climate Change Philanthropic Action Network (CCPAN) and to the signing of the Kyoto Agreement in Bali, 2007.

## **VALUE**

NLS is a highly efficient means of creating structures that are unique, efficient and unparalleled in the construction industry.

### **Benefits include:**

- Intelligent composite structurally insulating shell system with superior structural and thermal capabilities
- Guarantees structural integrity of any type of building up to 30m (8-9 floors)
- Rigid insulation guarantees strong and continuous thermal integrity over time
- Cost efficiency making it highly competitive
- Formulated composite system containing
- no wood
- On-site construction time is drastically reduced
- Intelligent technology reduces the amount of skilled labor required
- Constructed using computer integrated systems guarantees maximum efficiency, accuracy and quality assurance
- Does not burn nor promote fire
- Not prone to mold, mildew, rot, vermin, termites, etc.
- Rapid Assembly – Can be assembled in a fraction of the time versus traditional building methods.
- Reduced impact on the environment
- All materials are recycled or recyclable
- Reduced waste

## NEW & EXISTING APPLICATION



The NCW can be incorporated into the design process of new/proposed developments in the same manner as existing building methods.

In addition, the NCW can also be utilized in the renovation of existing buildings to provide a more efficient structure.

## SUSPENDING BED



The Suspending Technology is a revolutionary development for the housing industry that can double the living space of any area. Unlike a "Murphy Bed" it does not take up the bulkiness of wall space. It also does not have the discomfort of a sofa bed, nor the limited space of a day bed. The Suspending System supports a King Size bed and because of its design can be used with any kind of mattress, thus allowing the client to select a mattress of their choosing. During the day the bed is seamlessly hidden in the ceiling cavity of the house providing maximum aesthetics and common space. In the evening the bed is lowered by the touch of a button to provide a large comfortable sleeping area. The Suspending Bed System is a perfect solution for a multitude of building sectors.

## NANO COUCH



The Nano Couch is another example of the efficiency of the Nano Living System from its Feng Shui design to application of storage drawers beneath in what is typically dead space.

## NANO TABLE



The Nano Table uses simple design and ease of use to provide maximum functionality. During the day the table can be used for eating, working or any activity requiring a table or desk. In the evening the backs of the chairs fold down, the table is lowered to the level of the seats of the chairs, allowing the bed to be lowered atop at a comfortable level.

## NANO KITCHEN



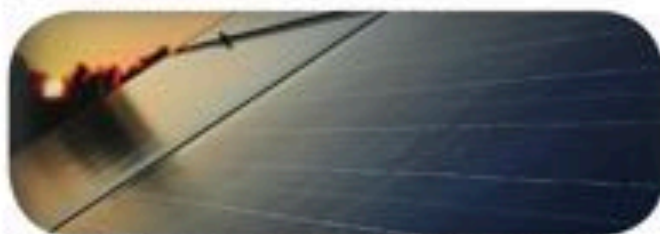
The Nano Kitchen includes all the necessities of a kitchen into a small, yet functional and comfortable space. The kitchen includes: oven, microwave, sink, cook top, refrigerator/freezer, 2-in-1 washer/dryer, and integrated cutting board.

## SOLAR PANELS



Energy prices are on the rise and we are in need to find alternative energy sources. Immediate solutions are in high demand, not just due to rising energy costs but also due to energy production's contribution to carbon emissions and climate change. NLS currently offers monocrystalline and polycrystalline solar PV panels to achieve maximum wattage yields. NLS also offers solar roof tiles and solar striping. Though the two latter options are more aesthetically pleasing they have not quite reached the solar efficiency and yielding amounts of solar PV panels.

## SOLAR WATER COLLECTORS



Solar water heaters are famous for their excellent performance and competitive pricing in the sector of hot water production. With a solar water heating system you will be able to warm your water not only for your house but also your swimming pool.

## WIND TURBINES



Wind turbines are a great compliment to the use of solar panels and have been used throughout

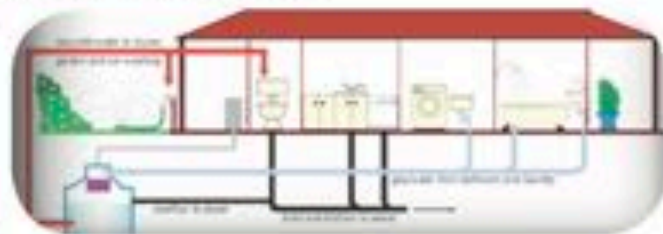
society for hundreds of years. Creating a hybrid solution of using the two elements increases the amount of energy that can be created when there is no sun, such as on cloudy days, during the night or anytime when sunlight is not prevalent or available.

## AIR EXCHANGE SYSTEMS



Air Exchange Systems are an excellent addition to ventilated heating/cooling systems. In cooler climates the system helps to "pre-heat" the incoming air prior to entering the heating system. In cooler climates the system help to "cool" the incoming air prior to entering the cooling system. Therefore, in both climates an air exchange system is beneficial to any type of ventilated air system and reduces energy usage to heat or cool the incoming air. In addition, air exchange systems can help to remove moisture from areas such as bathrooms, kitchens, laundry rooms and other areas producing moisture, humidity and stale air

## WATER RECYCLING



Grey water recycling systems reuse water from sinks, showers and bathtubs to be used for toilets. This reduces the need to use potable water for toilet needs and makes use of water that is normally sent directly to the sewer.

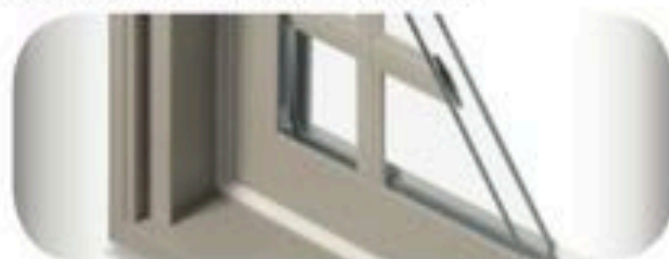


## WATER COLLECTION



There are a variety of water collection systems and harvesting rainwater is a relatively simple and efficient method. These systems collect rainwater from the roof and store it in above and underground storage tanks. The water can then be used for exterior purposes, such as washing your vehicle or watering your garden. It also eliminates the use of potable water for these applications. Water collection can be taken one step further with the installation of an underground storage tank that uses collected rainwater not just for exterior use, but as well for interior use, such as for potable water.

## ENERGY EFFICIENT WINDOWS



Low-emittance (low-E) windows are a great addition to a new building or renovation of an existing building, as they reduce heat and cold transfer through windows, which are traditionally one of the main factors of thermal transfer. Low-E windows suppress radiative thermal flow through a microscopically thin, virtually invisible multilayer glazing and are transparent to visible light. This greatly reduces thermal loss through windows in cooler climates and limits the amount of heat entering a home in warmer climates.

## SOLAR WINDOWS (COMING SOON....)



Though not yet available on the market, solar windows are in the development process and will further revolutionize the building industry.

## ECO-FLOORING



Cork, the same material used to make corkboards and wine bottle corks can also be used for flooring. In fact, it is one of the most sustainable flooring options currently available. Even though cork comes from trees, it is harvested without killing the tree and grows back extremely quick. It is a soft material, like carpeting, but also works well in situations where you might use tile, such as in a bathroom. Unlike carpeting, it is easy to sweep clean and doesn't catch pet dander, dust, and other allergens. Cork is also an excellent insulator regarding both thermal and acoustic values.

Similar to cork, bamboo grows very quick. There are even some bamboos that can grow up to 12" per day and once cut into strips can be made into planks and stained just as any other wood. In addition, bamboo is one of the hardest woods and has a tremendous lifespan. It is also very easy to clean and maintain.

## INTERIOR PANELING



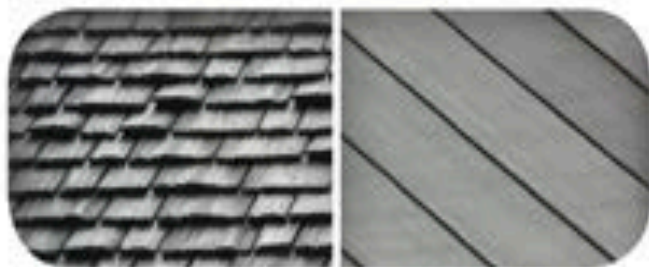
Currently there exist numerous alternatives to gypsum for wall coverings. One alternative is a fiber cement board laminated with a vinyl top providing the appearance of natural wood at a fraction of the cost of real wood while reducing the impact on the environment. Also available are fiberglass reinforced panels (FRP's). In turn, wall coverings can provide a much warmer feel than traditional gypsum board and are quick to assemble and easy to maintain. Furthermore, the NCW also eliminates the need for gypsum board application and can be painted or have elements, such as tile or FRP's, applied directly to the wall.

## EXTERIOR CLADDING



Exterior cladding ranges from fiber cement panels to recycled EPS (Expanded Polystyrene) panels, which have the look of wood without the environmental impact; Fiber Reinforced Plastic, which provides excellent resistance to corrosive effects and has an array of finishes; Aluminum siding, a new concept of external finishing for residential developments is developed with superior precision and due to its interlocking system allows fast assembly, tremendous strength and long lifespan.

## ECO-ROOFING



Most metal roofing is produced with no less than 25% and up to 98% of post-consumer recycled waste. Also, metal roofs can be installed directly over the existing roofing material, thus reducing waste. In addition metal roofs have a 60-year lifetime and require virtually no maintenance as they are will not rust, crack, or rot. Metal roofing also reflects sunlight and therefore heat in warm temperatures will not be absorbed into the building. Studies have shown energy savings up to 20% in buildings with metal roofs.

Rubber shingles look like traditional cedar shingles, but are made from recycled tires. They are also capable withstanding high winds, have a Class A fire rating and have strong insulating abilities. This also reduces tire waste build up, a material that takes very long to decompose and constantly causes disruptions with the environment.

Recycled plastic and recycled EPS (expanded polystyrene) roof tiles are an excellent alternative, as they have an independent interlocking system for better strength and wind resistance, as well make use of material that would normally end up in a landfill. They also have high fire rating, meet future environmental demands and are lighter and faster to install.



steel also has superior fire ratings, excellent thermal performance and is comprised of recycled material.

4. Cam Locks-Each NCW panel contains three cam locks on each vertical edge, the hooks from 3 mm thick mild steel with a zinc die-cast cam and mild-steel-plated, hook-locating rivet. Utilization of the cam lock system help to ensure a superior connection point and thermal envelope.

#### OFF-SITE MANUFACTURING



Initial design work is conducted using specialized computer aided design and drafting software that is integrated with light gauge steel roll (LGS) forming machinery. Once finished, the final design work is transferred electronically to the LGS roll forming machine.



Once the data has been received by the machine the computer automated systems initiate the steel forming process.



The final result is the production of light gauge steel framing studs and tracks.

Frames are then assembled in accordance with the design plans and drawings.



Upon completion the frame is placed inside of the mold and entered into the polyurethane injection machine.



Once finished the NCW panels are moved to a storage area to be loaded for transport and shipped out.

#### ON-SITE ASSEMBLY



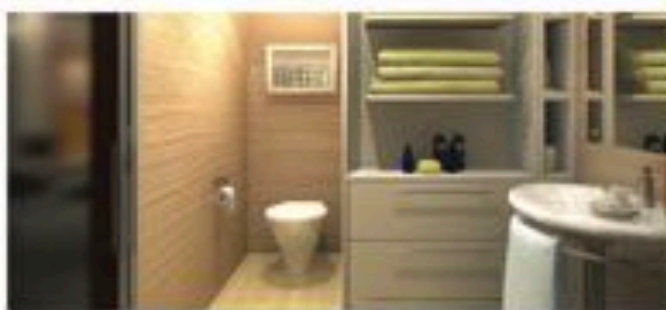
The NCW panels are delivered to the job site where they are off loaded to a designated storage area and site erection begins.

Outer framing walls are completed followed by erection of interior and infill sections.

Upper floor joists or roof trusses are installed, followed by roofing material and exterior finishing.



## DISASTER RELIEF



## LIFE IMPACT FOR HUMANITY works

and here's an example on how to get started for LIFH Phase I:



### City of Oakland Awarded \$14.8M to Convert Motel into Homeless Housing

Date Posted: **April 27th,  
2022**

*Oakland, CA* – The City of Oakland has been awarded \$14.8 million of Homekey funding to acquire and convert the Piedmont Place motel into housing that will address the needs of our most vulnerable neighbors.

Located on MacArthur Boulevard near the base of vibrant Piedmont Avenue,

Piedmont Place will offer 44 units of housing and wrap-around services for people experiencing chronic homelessness. The development team, comprised of MPI Homes and Bay Area Community Services (BACS), bring deep experience in service-enriched affordable and supportive housing.

“Piedmont Place is another example of the City scaling up a model that works: coupling housing with services that support our unsheltered neighbors transition from the streets to housing,” said **Oakland Mayor Libby Schaaf**. “Our City staff works tirelessly to end homelessness in our streets, and I’m grateful for Governor Newsom’s leadership and his partnership as we all work together to urgently address this crisis.”

Piedmont Place’s central location is accessible via several main bus lines, and is nearby MacArthur BART, Kaiser Hospital, grocery stores, and other key service amenities. Due to the property’s excellent condition and low rehabilitation needs, the project expects to welcome residents by Fall 2022.

“This project demonstrates how state and local funding merges with projects rooted in community, supported by non-profit providers, to develop sustainable solutions for combating the homeless crisis,” said **Shola Olatoye**, Housing & Community Development Director for the City.

The success of this project was a true cross-departmental effort. The City has dedicated \$3.3 million of local Measure KK funds from the Housing & Community Development Department (HCD) towards the acquisition and rehabilitation of the property, as well as \$3.35 million of the Human Services Department’s (HSD) allocation of Homeless Housing, Assistance and Prevention (HHAP) grant funds to support operations. Alameda County has also committed services funding for the project.

# L.I.F.H. PRESS RELEASE

THE POST December 28, 2022 - January 3, 2023 (Page 10 Oakland Post)  
"Formerly Incarcerated Group Seeks Partners to Address Homeless Crisis" By Richard Johnson

postnewsgroup.com



Richard Johnson (left) from Formerly Incarcerated Giving Back (FIGB) reached out to Jonathan Jones (right), from AASEG and Dr. Maritony Yantot, an international community development technician, to respond to Oakland Post Publisher Paul Cobb's challenge to "just serve our community by doing what's needed for those in need." Photo courtesy of Richard Johnson.

## Formerly Incarcerated Group Seeks Partners to Address Homeless Crisis

By Richard Johnson

There is a real state of emergency that is taking place right before our very eyes. This emergency of homelessness has impacted every sector of our society and it's not getting better.

This crisis has a foothold in nearly all major cities as well as rural and smaller areas in California. All across the state steps are being made to bring resolution to this crisis. In some cities, the need is more urgent than in others.

Gov. Gavin Newsom has put aside funds to combat this pandemic of homelessness. But real solutions are still lacking. People are literally dying as a result of inaction by the power brokers, community leaders, and some religious quarters of society.

This is unacceptable. We can and must do better. I am working with some other groups to complete a clear plan to present to the new Mayor and all city councilmembers, supervisors, clergymen, developers, and nonprofits who really desire productive change

by tackling homelessness, joblessness, crime, and violence as the highest priority of the new administration.

The Formerly Incarcerated Giving Back organization has been meeting with Jonathan Jones, a member of African American Sports & Entertainment Group (AASEG), Dr. Maritony Yantot, and the Life Impact for Humanity (L.I.F.H.) program to complete our plan for affordable housing in Oakland.

We want to meet with the Mayor-elect Sheng Thao as a follow-up to our first meeting held at the PIC offices while she was running for office.

At that meeting, Thao stated, "I would like to focus on addressing this issue of homelessness in my first 100 days as the new Mayor of Oakland."

L.I.F.H. believes the solutions must involve faith-based and community leaders.

L.I.F.H. is an outreach program that partners with leaders in the community to bring about change

and stability. We want to establish programs to equip homeless veterans, elders, disabled, single parents, and family incarcerated through programs to be pillars of the community and society.

We can equip the youth with tools to build for their future and to help sustain their community. We want to provide each individual with opportunities to succeed in all spheres of influence such as family, religion, government, education, business, science, innovation, technology, media, arts, and entertainment.

The robust plan will allow for unity and diversity, and it will take a leap of faith to work together to save our community, while demonstrating that we belong to greatness.

We all need to make a conscious decision to work together as a community to help those in need. No more preaching and teaching, but replace it with double, credible actions of change for the betterment of Oakland.

## CONTACT INFO

For more information,  
please contact one of us today:

### H.E. Dr. Maritony Y. Jones

- Mobile: +1-707-301-6775

- Email:

[mymaritony@gmail.com](mailto:mymaritony@gmail.com)

[impact77@pm.me](mailto:impact77@pm.me)

### Mr. Jonathan P. Jones

- Mobile: +1-510-395-7974

- Email:

[jonathanfitnessjones@gmail.com](mailto:jonathanfitnessjones@gmail.com)

### Mr. Richard Johnson

- Mobile: +1-925-481-0496

- Email:

[formerlyinc.gb@gmail.com](mailto:formerlyinc.gb@gmail.com)